


SZ 250





ROBLAND®
MADE IN BELGIUM




 4500 RPM
 250 mm
 85 mm

 600-1200 mm



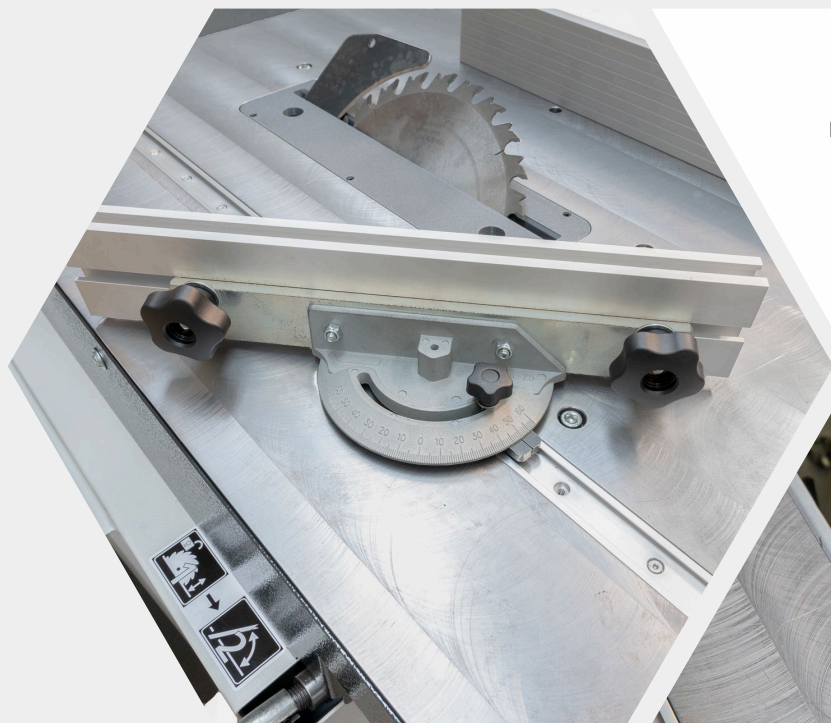
 3x400V/1x230V
 4 HP / 3 HP

 0°-45°

 200 kg



STRENGTHS



MITRE FENCE

Due to the absence of a sliding table, the machine becomes **highly compact**. A **T-groove** is included for the **mitre fence** which allows the user to make precise and stable cuts.

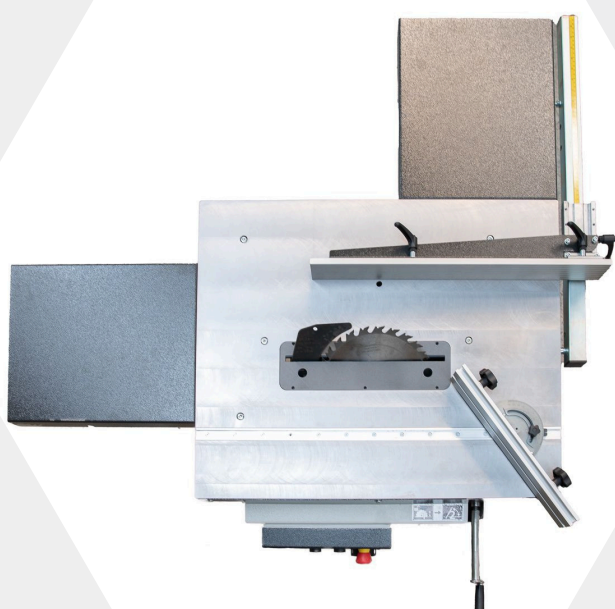
SAW AGGREGATE

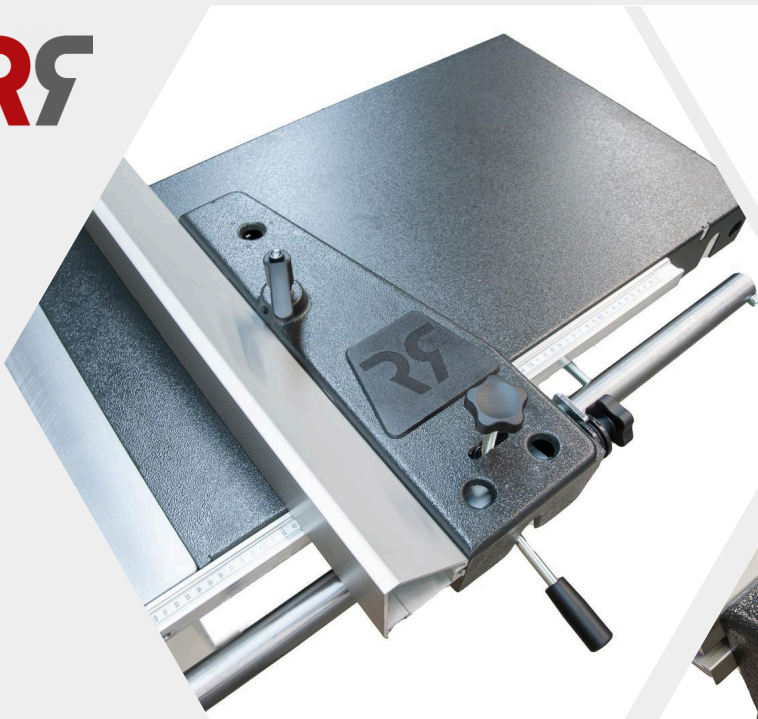
The renowned HX saw aggregate allows the machine to cut materials up to **85 mm** in height, making it versatile. A **3D-printed insert** facilitates the very **easy replacement** of the **saw blade**, enhancing the machine's flexibility and user-friendliness.



Compact yet powerful.

This panel saw is specifically crafted for spaces where **maximizing every square meter** is essential. Whether in compact carpentry workshops or a DIY enthusiast's garage, this saw is versatile, offering the necessary power and precision for high-quality work.



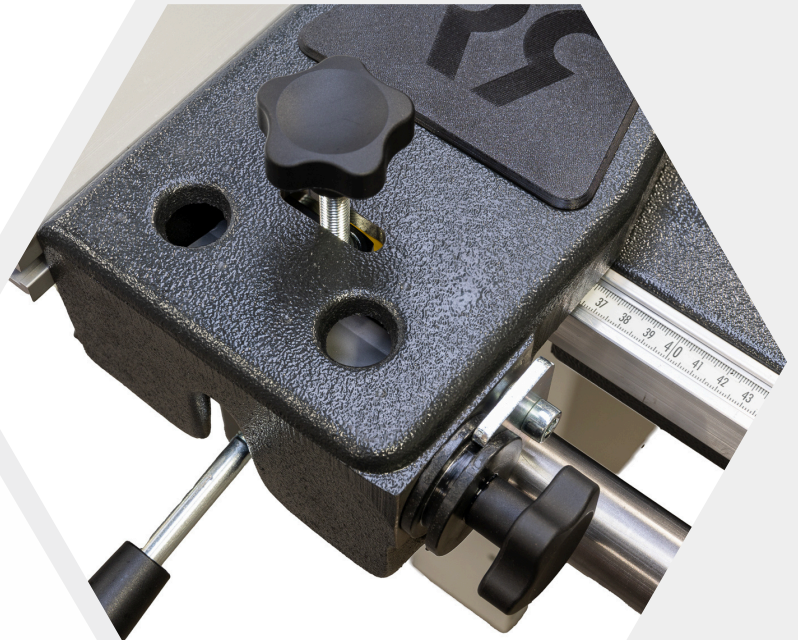


PARALLEL FENCE

We recognize that each woodworker has distinct requirements. Hence, we provide the flexibility to select the cutting width and precision. This can range from an economic compact 650 mm width to a more extensive 1200 mm on a professional round bar.

FINE ADJUSTEMENT OF PARALLEL FENCE

The fence with a **round bar** features **precise fine adjustment**, facilitating accurate settings crucial for **speed and consistency**, particularly vital for projects where every millimeter counts.



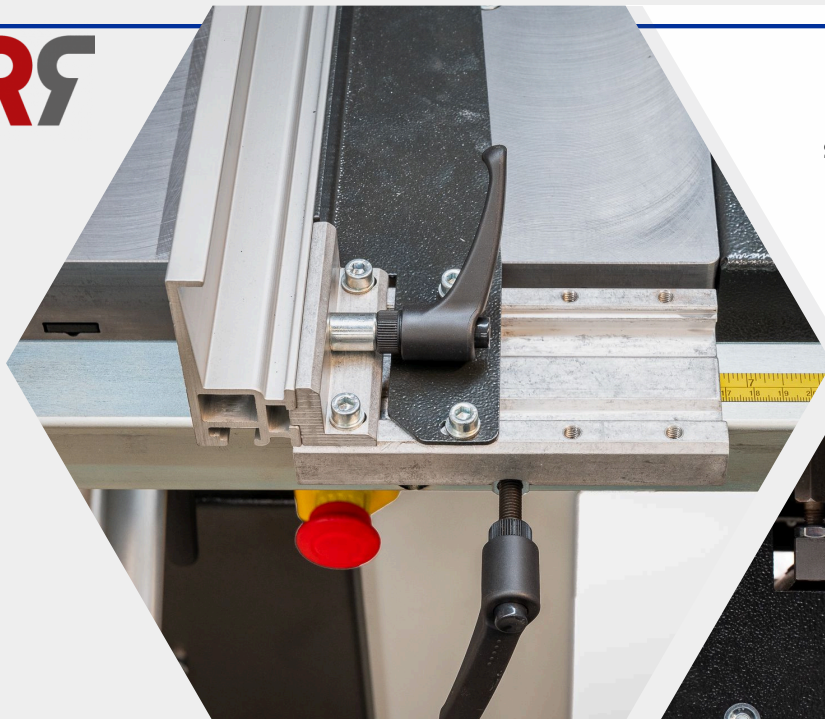
WHEELSET

The wheel set enhances the KZ panel saw's flexibility and **maneuverability**, enabling effortless relocation to various locations in the workshop.

Pallet truck

The KZ panel saw is designed for **easy movement** with a pallet truck, enabling effortless relocation to **various workspaces** or yards, ideal for professionals seeking a versatile solution.





STRAIGHT BAR GUIDE

The straight bar guidance offers a **cost-effective solution** for precise sawing guidance. This option merges **economic advantages** with **functional simplicity**, making it a superb selection for users who prioritize both quality and affordability.



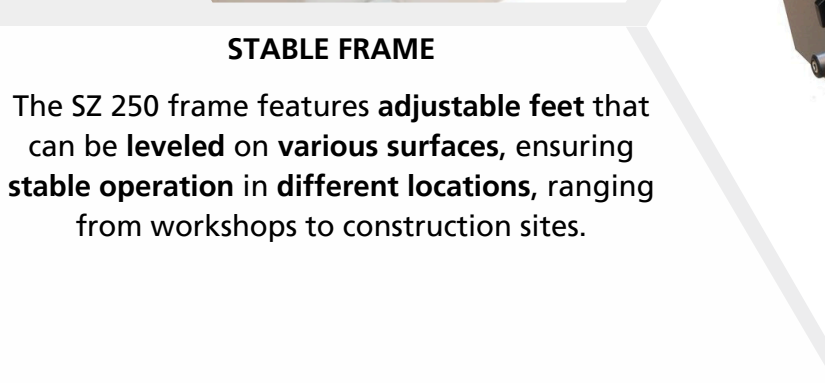
45° QUALITY

The saw frame of the KZ panel saw can be **easily** adjusted to a **45° angle**, allowing for seamless miter sawing operations, ideal for professionals seeking precision and versatility.



230 VOLTS OR 400 VOLTS

The KZ panel saw is also offered with a **single-phase motor**, providing 3 HP. This choice is perfect for individuals without access to a 3-phase connection, allowing **convenient** use of the saw in yards or garages.



STABLE FRAME

The SZ 250 frame features **adjustable feet** that can be **leveled** on **various surfaces**, ensuring **stable operation** in **different locations**, ranging from workshops to construction sites.





Visit our website now.

Robland NV

44 Kolvestraat

8000 Bruges - Belgium

Telephone: +32 50 458 925

Email: info@robland.com

Website: www.robland.com



Follow us on Facebook.

www.facebook.com/Roblandmachines



Follow us on Instagram.

www.instagram.com/robland_nv



Follow our YouTube channel.

www.youtube.com/robland



Follow our TikTok account.

www.tiktok.com/@robland_nv